



Derek Izuel,
CFA

- Over 23 years investment experience, 12 with team
- MBA – University of Michigan
- BA – Computer Science, University of California
- Chief Equity Officer, HighMark Capital – 2008-2018
- Lead Portfolio Manager, Invesco 2000-2008



Justin Sheetz,
CFA

- 19 years experience
- MS – Computational Finance and Risk Management, University of Washington
- Previous Firms: Blackrock, Barclays Global Investors – Matthews Asia

Contact Us

Vitruvian Capital Management
(415) 928-0432

www.vitruviancap.com

info@vitruviancap.com

Performance as of 9/30/2021

Small Cap Equity Strategy

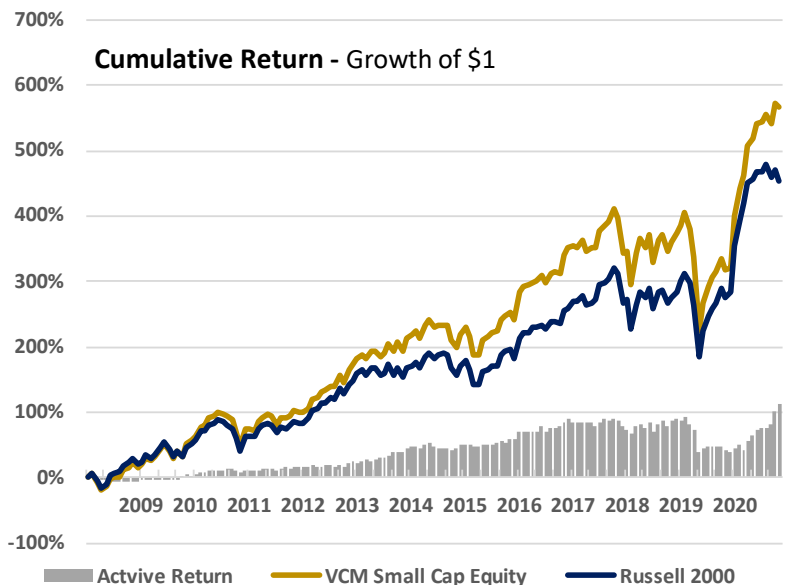
Vitruvian Capital Management's Small Cap Equity strategy provides efficient access to the abundant alpha available in small and micro-cap stocks. Using systematic methods, we apply stock specific analysis and risk management across the global small cap universe to produce superior, consistent returns

Investment Philosophy

We believe the analysis of the investment merit of each individual stock based on data specific to that company, combined with prudent risk management produces consistent and superior returns

Key Strategy Characteristics

- **Insight:** Insightful information comes from those who know the most about a firm: Management, Investors, Analysts
- **Breadth:** A broad collection of independent performance drivers are more dependable than a few large ones
- **Focus:** Understanding where our competitive advantage lies ensures robust, consistent and superior results



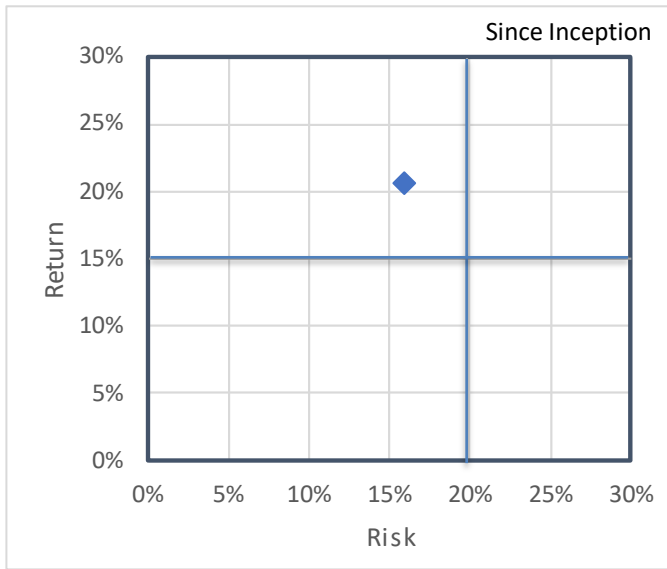
Return Summary - Gross of Fees	YTD 2021	Inception (12/2008)	Volatility	Sharpe Ratio
VCM Small Cap Equity	22.80%	15.93%	20.59%	0.77
Russell 2000	12.41%	14.29%	19.74%	0.71

Trailing Returns - Gross of Fees	1 Year	3 Year	5 Year	7 Year	10 Year
VCM Small Cap Equity	59.47%	10.19%	13.55%	12.52%	16.18%
Russell 2000	47.68%	10.54%	13.45%	11.90%	14.63%

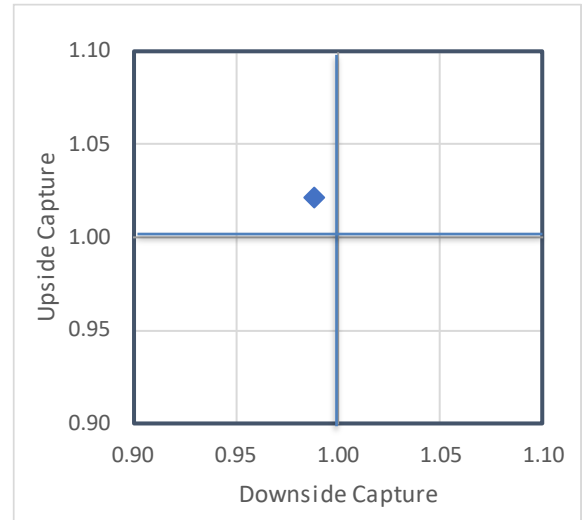
Small Cap Equity

as of 06/30/2021

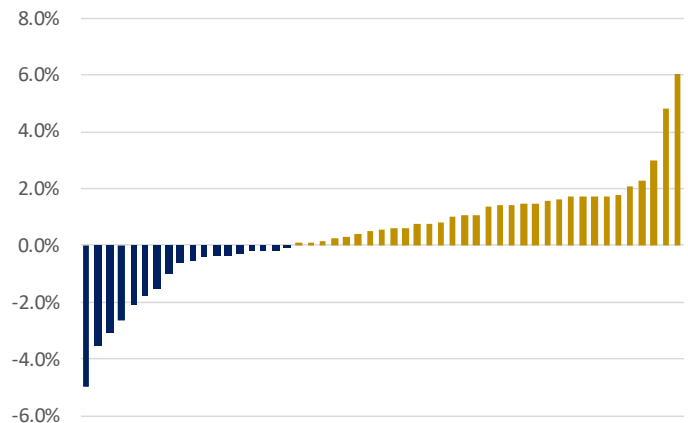
Risk vs. Return



Consistency of Returns – Upside/Downside Capture



Strategy has outperformed in 33 of 51 quarters



Portfolio Characteristics

Small Cap Equity

Market Cap (Average \$m)	3,398
Market Cap (Median \$m)	2,982
Price to Earnings Ratio	19.8
Price to Book Ratio	2.70
Debt to Equity Ratio	0.48
Dividend Yield	1.19
Price to Sales	5.78

Industry Exposures

Small Cap Equity

Industrials	18.67%
Technology	15.68%
Health Care	15.18%
Financials	11.04%
Consumer Discretionary	10.80%
Real Estate	7.53%
Energy	6.37%
Materials	6.33%
Consumer Staples	3.37%
Utilities	2.98%
Communications	1.70%

Top 10 Stock Positions

Weight

SPS Comm Inc	1.87%
Spectrum Brands Hldg Inc.	1.76%
Portland General Elec Co	1.76%
Korn Ferry	1.63%
Balchem Corp	1.38%
UMB Finl Corp	1.36%
Investors Bancorp Inc.	1.33%
Marathon Oil Corp	1.31%
Deckers Outdoor Corp	1.29%
Progress Software Corp	1.29%
Total Top 10 Weight	14.97%

Vitruvian Capital Management

Footnotes and Disclaimers

Year	Composite Gross Return (%)	Composite Net Return (%)	Custom Benchmark Return (%)	Composite 3-Yr St Dev (%)	Benchmark 3-Yr St Dev (%)	Number of Portfolios	Internal Dispersion (%)	Composite Assets (\$M)	Firm Assets (\$B)
2009	22.11	21.08	27.17			< 6	n/a	17.698	16.82
2010	36.91	35.78	26.86			< 6	n/a	23.585	16.68
2011	-2.72	-3.55	-4.17	26.37	25.10	< 6	n/a	27.107	15.65
2012	19.65	18.65	16.35	21.74	20.54	< 6	n/a	64.306	17.50
2013	39.04	37.90	38.82	17.87	16.87	< 6	n/a	79.977	14.53
2014	13.10	12.15	4.90	12.24	13.11	< 6	n/a	83.499	15.27
2015	-3.34	-4.16	-4.41	13.08	13.58	< 6	n/a	115.496	15.10
2016	24.77	23.73	21.31	15.39	15.73	< 6	n/a	145.995	15.25
2017	15.36	14.40	14.65	14.38	13.94	< 6	n/a	154.753	16.33
2018	-12.48	-13.23	-11.01	14.48	14.39	< 6	n/a	0.338	0.460
2019	27.48	26.49	25.53	16.30	15.71	< 6	n/a	0.368	0.496
2020	7.66	6.80	19.96	26.87	27.26	<6	n/a	0.395	0.791

Vitruvian Capital Management, LLC claims compliance with the Global Investment Performance Standards (GIPS®) and has prepared and presented this report in compliance with the GIPS standards. Vitruvian Capital Management, LLC has been independently verified for the periods 9 November 2017 through 31 December 2019. The verification report is available upon request. Verification assesses whether (1) the firm has complied with all the composite construction requirements of the GIPS standards on a firm-wide basis and (2) the firm's policies and procedures are designed to calculate and present performance in compliance with the GIPS standards. Verification does not ensure the accuracy of any specific composite presentation.

- Vitruvian Capital Management, LLC is defined as an independent investment management firm that is not affiliated with any parent organization. Performance shown prior to 9 November 2017 represents results achieved by Derek Izuel while he was part of HighMark Capital. Policies for valuing portfolios, calculating performance, and preparing compliant presentations are available upon request.
- The Small Cap Equity Composite includes all institutional portfolios that invest in small-cap U.S. equities with the goal of providing long-term capital growth from a well-diversified strategy. The composite was created in November 2017. Beginning 9 November 2017, all accounts in the composite are nonfee paying.
- The benchmark is the Russell 2000 Equity Index. Benchmark returns do not reflect the deduction of advisory fees, custody fees, transaction costs, or other expenses of investing. Total benchmark returns assume the reinvestment of dividends and other earnings. An investor cannot invest directly in an index.
- Valuations are computed and performance is reported in U.S. dollars.
- Gross-of-fees returns are presented before management and custodial fees but after all trading expenses. Model net-of-fees returns are calculated by deducting the highest fee of 0.80% from the monthly gross composite return. The management fee schedule is as follows: 0.80% on the first \$50 million; 0.75% on the next \$100 million; 0.70% on the next \$150 million; 0.65% thereafter.
- A complete list of the firm's composite descriptions is available upon request.
- Internal dispersion is calculated using the equal-weighted standard deviation of annual gross returns of those portfolios that were included in the composite for the entire year. For those years with less than or equal to 5 portfolios, the calculation of internal dispersion is not a meaningful statistical measure.
- The three-year annualized standard deviation measures the variability of the composite and the benchmark returns over the preceding 36-month period. The standard deviation is not presented for 2009 and 2010 because monthly composite and benchmark returns were not available and is not required for periods prior to 2011.
- The International Small Cap Equity Composite includes all institutional portfolios that invest in small-cap equities with the goal of providing long-term capital growth from a well-diversified strategy. The composite was created in July 2017. All accounts in the composite are nonfee paying.
- The benchmark is the MSCI EAFE Small Cap Index. Benchmark returns do not reflect the deduction of advisory fees, custody fees, transaction costs, or other expenses of investing. Total benchmark returns assume the reinvestment of dividends and other earnings. An investor cannot invest directly in an index.
- Returns before July 17, 2020 reflect theoretical results of the strategy. The results do not represent actual results.
- The period from December 30, 2016 to January 11, 2018 represents a model portfolio managed at HighMark Capital Management.
- The period from January 12, 2018 to July 16, 2020 represents a back-tested portfolio. The same investment selection process used in the model portfolio was used during the backtest period. The initial portfolio was the last portfolio from the model portfolio period.
- Backtested performance is NOT an indicator of future actual results. The results reflect performance of a strategy not [historically] offered to investors and do NOT represent returns that any investor actually attained. Backtested results are calculated by the retroactive application of a model constructed on the basis of historical data and based on assumptions integral to the model which may or may not be testable and are subject to losses.
- General assumptions include: The managing firm would have been able to purchase the securities recommended by the model and the markets were sufficiently liquid to permit all trading. Changes in these assumptions may have a material impact on the backtested returns presented. Certain assumptions have been made for modeling purposes and are unlikely to be realized. No representations and warranties are made as to the reasonableness of the assumptions. This information is provided for illustrative purposes only.
- Backtested performance is developed with the benefit of hindsight and has inherent limitations. Specifically, backtested results do not reflect actual trading or the effect of material economic and market factors on the decision-making process. Since trades have not actually been executed, results may have under- or over-compensated for the impact, if any, of certain market factors, such as lack of liquidity, and may not reflect the impact that certain economic or market factors may have had on the decision-making process. Further, backtesting allows the security selection methodology to be adjusted until past returns are maximized. Actual performance may differ significantly from backtested performance.
- Backtested results are adjusted to reflect the reinvestment of dividends and other income and, except where otherwise indicated, are presented gross-of fees and do not include the effect of backtested transaction costs, management fees, performance fees or expenses, if applicable. Please note all regulatory considerations regarding the presentation of fees must be taken into account. No cash balance or cash flow is included in the calculation.
- Gross-of-fees returns are presented before management and custodial fees but after all trading expenses. Model net-of-fees returns are calculated by deducting the highest fee of 0.80% from the monthly gross composite return. The management fee schedule is as follows: 1.10% on the first \$50 million; 1.00% on the next \$50 million; 0.90% on the next \$100 million; 0.80% thereafter.